



# PRODUCT CATALOGUE

MADE IN  
**INDIA**  
MAKING INDIA SECURE



STAY SECURED  
SAFETY ASSURED



# Active-108

2 Zones Activation  
Deactivation Through Key

Burglar Alarm  
Control Panel



Tamper Proof Alert



2 Zones Activation Deactivation Through Key



Day/Night Mode Arming



Led's Indicate Operational Individual Zone Status



Day Mode Panic



Built In Battery Backup Provision

### Optional



Facility To Attach Auto Dialer



Arm/disarm External Remote Provision

## Features

- 30/60 Sec Delay Time Setting
- Daily Alert
- Day/Night Mode Arming
- One Delay Zone, One Immediate Zone
- Instant Siren Alert For Zone Opens
- Led Indicators For Individual Zone Status
- Two Sirens With Tamper Provision
- Modified Siren Out Timing For Short & Long
- Built In Battery Backup Provision
- Low Battery/Reverse Battery Indicators
- Resettable Fuse
- Control Panel Door Tamper
- Micro-Controller Based System

## Optional

- Wireless Remote
- Auto Dialer

## Specifications

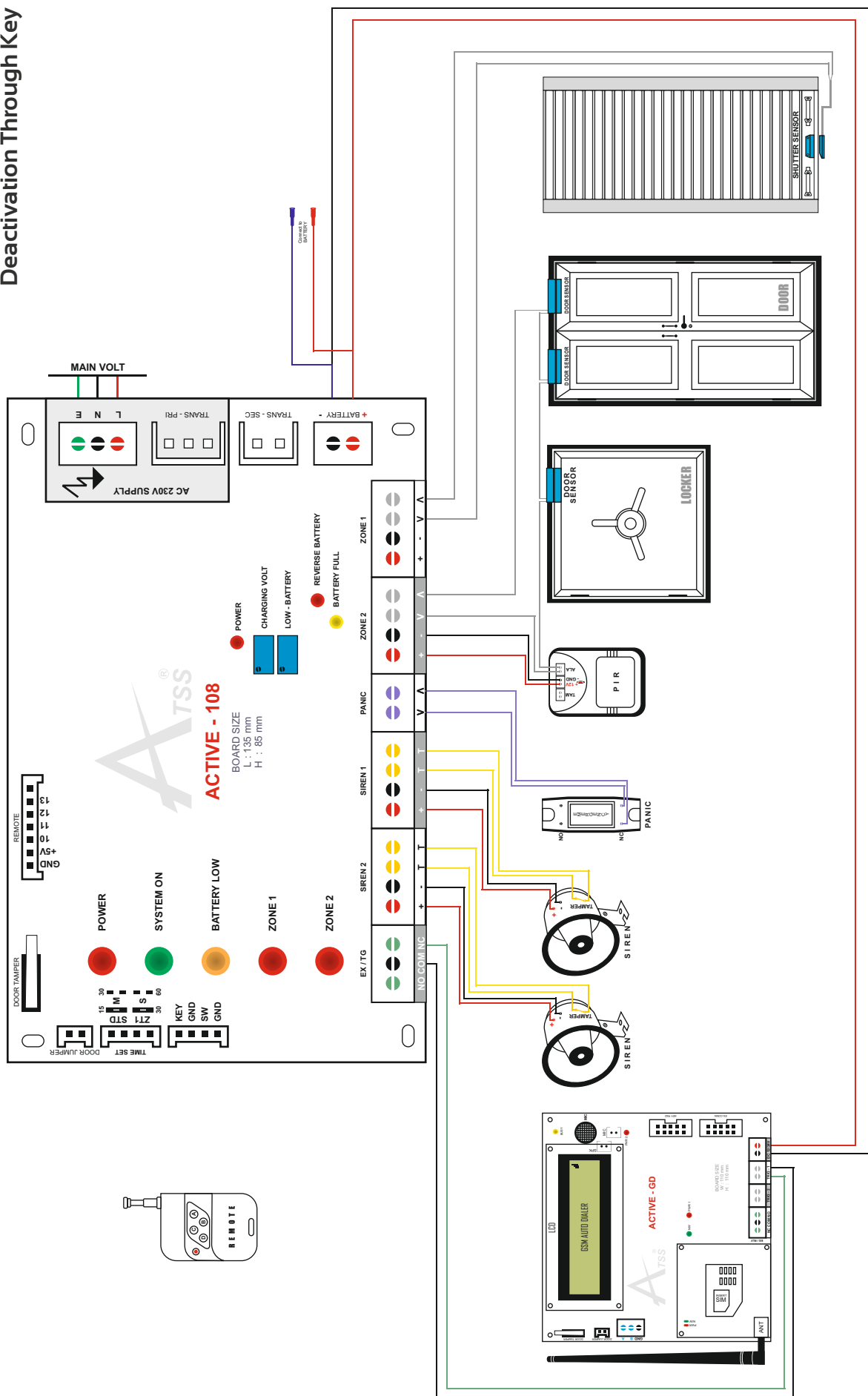
<b>POWER SUPPLY</b>	
Max Power Consumption	36 Watts
AC Main Supply	220-240 V AC /50 Hz
Transformer-Step down	230 V AC/50 Hz(Pri) 18 V AC /2 A (Sec)
<b>BATTERY</b>	
Battery type	Battery is fully recommended Lead Acid Rechargeable Battery
Max Recharging Voltage-Input	13.7 V DC
Max Voltage/Current ratings	12 V DC/7 AH
<b>ZONES</b>	
Zone Response Time	< 500 Millisecond
Zone Loop Resistance	< 1kilo Ohm For Normally Closed
Max Output Voltage/Current for Sensor Supply	12 V/500 MA
Max Output Voltage/Current for Siren Supply	12 V/750 MA
Max Length of Sensor Cable (multi core cable)	150 m (Depends on cable resistance)
Max Length of Siren Cable (multi core cable)	75 m (Depends on cable resistance)
<b>RELAY-NORMALLY CLOSED</b>	
Max Output Voltage/Current	AC 240 V/ 5 A
<b>ENVIRONMENTAL</b>	
Environment	Residential/ Commercial/ Light Industrial
Max Humidity	95% Non-Condensing
Operating Temperature	0 °C To 45 °C
Storage Temperature	-20°C ~ + 60°C
<b>PHYSICAL</b>	
Colour	Grey Coloured Metal Box
Control Panel Dimensions(mm)	(H X W X L) = 240 X 90 X 240
Weight	2.9kg



ID - MA0001TN

# Active-108

2 Zones Activation  
Deactivation Through Key







# Active-207

2 Zones with Programmable  
Soft Touch Key

Burglar Alarm  
Control Panel



2 Zones With On Board Keypad



Two Individual Password



Built In Battery Backup Provision



LED's Indicate Operational/ Individual Zone Status



24 Hours Panic/Tamper Zone

Optional



Facility To Attach Auto Dialer



Arm/disarm External Remote Provision

## Specifications

### Features

- 0-240 Sec Delay Time Setting
- Daily Alert
- Arm/Disarm Through Password
- Changeable User Password
- Auto Arming Provision For Zones
- 24 Hrs Panic/Tamper Zone
- Immediate And Time Delay Zones Available
- Individual Zone Password Option
- Instant Siren Alert For Zone Open
- LED Indicators For Individual Zone Status
- Two Siren With Tamper Provision
- Modified Siren Out Timing For Short, Long & Infinite
- Siren Disconnect Sensing
- Built In Battery Backup Provision
- Low Battery/Reverse Battery Indicators
- Resettable Fuse
- Control Panel Door Tamper
- Micro-Controller Based System

### Optional

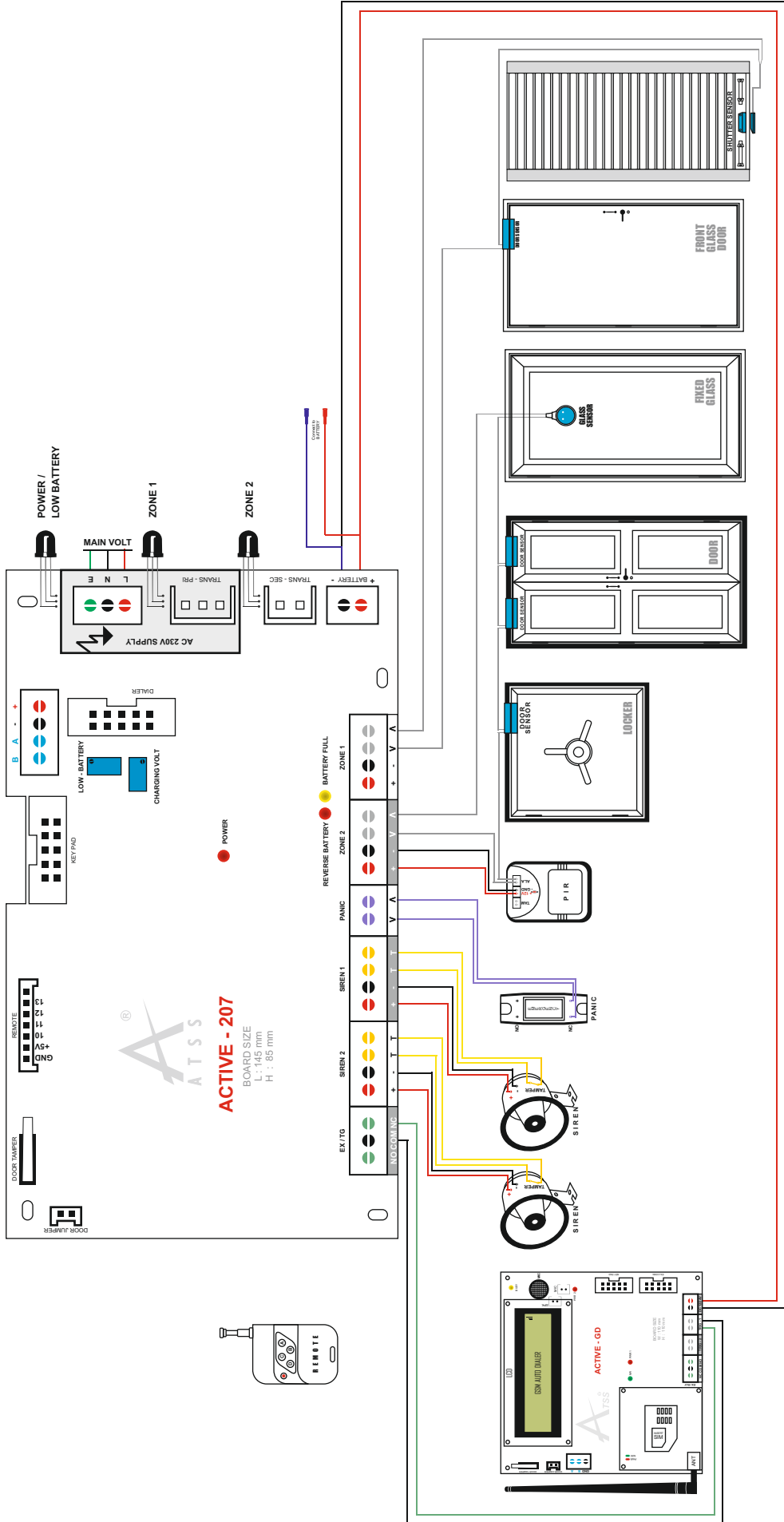
- Wireless Remote
- Auto Dialer

POWER SUPPLY	
Max Power Consumption	36 Watts
AC Main Supply	220-240 V AC /50 Hz
Transformer-Step down	230 V AC/50 Hz(Pri) 18 V AC /2 A (Sec)
BATTERY	
Battery type	Lead Acid Rechargeable Battery
Max Recharging Voltage-Input	13.7 V DC
Max Voltage/Current ratings	12 V DC/7 AH
ZONES	
Zone Response Time	< 500 Millisecond
Zone Loop Resistance	< 1kilo Ohm For Normally Closed
Max Output Voltage/Current for Sensor Supply	12 V/500 MA
Max Output Voltage/Current for Siren Supply	12 V/750 MA
Max Length of Sensor Cable (multi core cable)	150 m (Depends on cable resistance)
Max Length of Siren Cable (multi core cable)	75 m (Depends on cable resistance)
RELAY-NORMALLY CLOSED	
Max Output Voltage/Current	AC 240 V/ 5 A
ENVIRONMENTAL	
Environment	Residential/ Commercial/ Light Industrial
Max Humidity	95% Non-Condensing
Operating Temperature	0°C To 45°C
Storage Temperature	-20°C ~ + 60°C
PHYSICAL	
Colour	Grey Coloured Metal Box
Control Panel Dimensions(mm)	(H X W X L) = 240 X 90 X 240
Weight	2.8 kg



# Active-207

2 Zones with Programmable  
Soft Touch Key

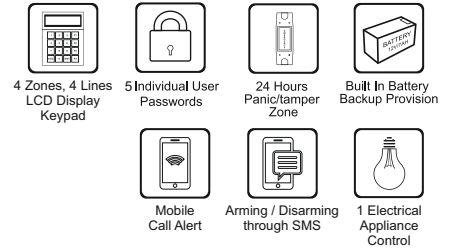




# Active GA 4

4 Zones GSM Alarm Panel with 80 Texts LCD display

Burglar Alarm  
Control Panel



## Features

- 0-240 Sec Delay Time Setting
- 1 Master / 5 Individual User Passwords
- 15 Texts SMS Option Available
- 50 Event Logs Info
- On Board Keypad With 64 Bit Lcd
- 24 Hrs Panic/Tamper Zones
- 4 Zones Alarm Panel
- Arm/Disarm Through Password/Sms
- Changeable User/Master Password
- Immediate And Time Delay Zones Available
- Instant Siren And Call/ SMS Alert For Zone Open
- Zone Status Indicators On Lcd
- Auto Arming Provision For Zones
- Individual Voice And Text Message Available For Each Zone
- 20 Sec Recording Time For Individual Voice message
- Built-In Gsm Communicator
- Memory Available To Store 10 Phone Numbers
- Receives SMS While Arm/Disarm
- Balance Status Can Be Checked By SMS
- Recorded Message Playback Speaker Provision Available
- If Network Strength Is Off, System Will Be Operated As Normal Panel
- Fully Reprogrammable For Future Options
- Two Sirens With Tamper Provision
- Modified Siren Out Timing (Up To 4 Hours)
- Built In Battery Backup Provision
- Low Battery/Reverse Battery Indicators
- Resettable Fuse
- Control Panel Door Tamper Available
- External Relay For Trigger Mode And Application Mode
- In Application Mode Relay Can Be Operated By SMS

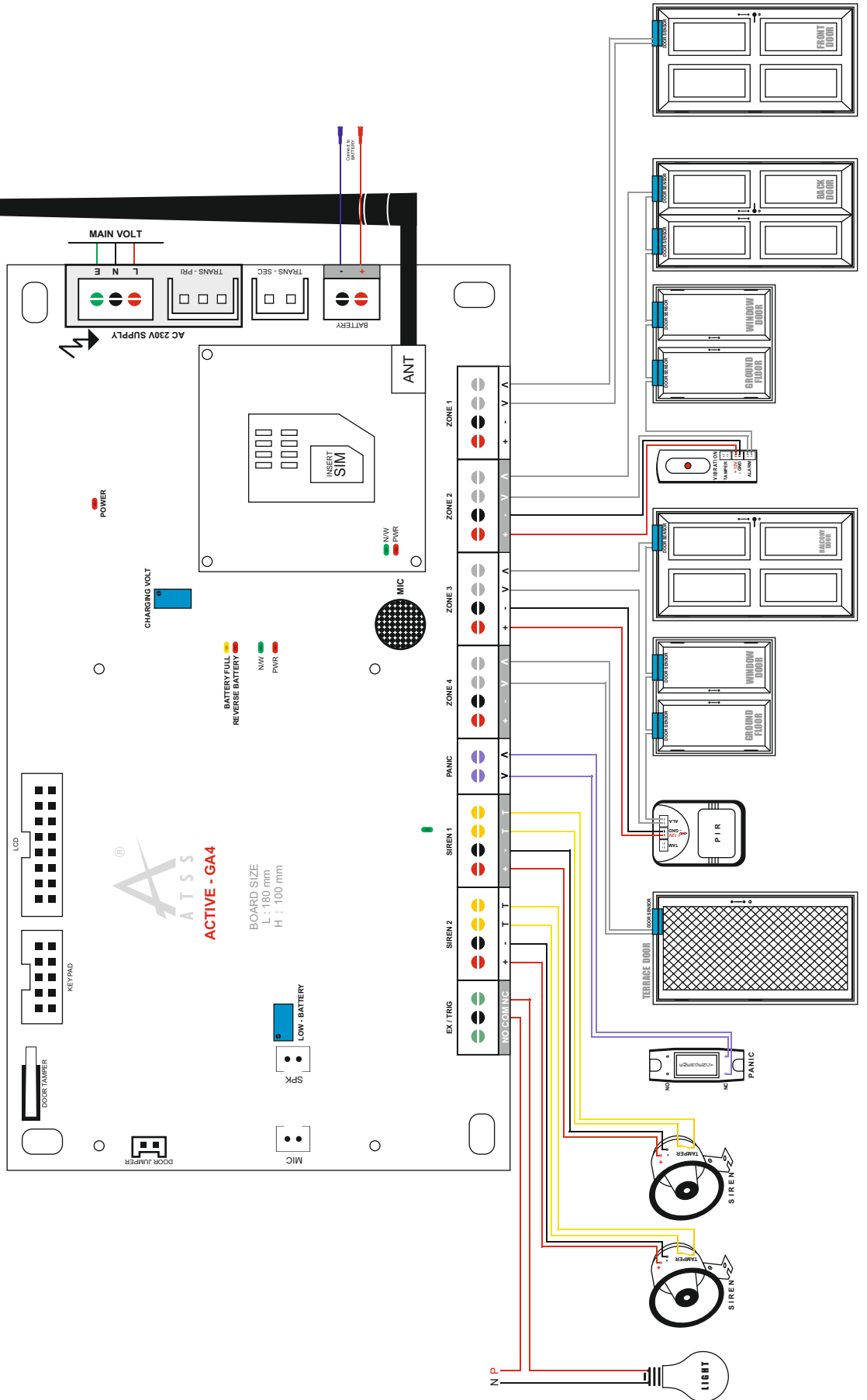
## Specifications

<b>POWER SUPPLY</b>	
Max Power Consumption	36 Watts
AC Main Supply	220-240 V AC /50 Hz
Transformer-Step down	230 V AC/50 Hz(Pri) 18 V AC /2 A (Sec)
<b>BATTERY</b>	
Battery is fully recommended	
Battery type	Lead Acid Rechargeable Battery
Max Recharging Voltage-Input	13.7 V DC
Max Voltage/Current ratings	12 V DC/7 AH
<b>ZONES</b>	
Zone Response Time	< 500 Millisecond
Zone Loop Resistance	< 1kilo Ohm For Normally Closed
Max Output Voltage/Current for Sensor Supply	12 V/500 MA
Max Output Voltage/Current for Siren Supply	12 V/750 MA
Max Length of Sensor Cable (multi core cable)	150 m (Depends on cable resistance)
Max Length of Siren Cable (multi core cable)	75 m (Depends on cable resistance)
GSM Antenna	5 dB Required
<b>RELAY-NORMALLY CLOSED</b>	
Max Output Voltage/Current	AC 240 V/ 5 A
<b>ENVIRONMENTAL</b>	
Environment	Residential/ Commercial/ Light Industrial
Max Humidity	95% Non-Condensing
Operating Temperature	0° C To 45° C
Storage Temperature	-20°C~+ 60°C
<b>PHYSICAL</b>	
Colour	Grey Coloured Metal Box
Control Panel Dimensions(mm)	(H X W X L) = 230 X 95 X 330
Weight	3.4kg



# Active GA 4

4 Zones GSM Alarm Panel with 80 Texts LCD display





# INFORMER

## 8 Input Zones GSM Communicator

Eight Inputs  
Communicator



8 Trigger



Mobile  
Call Alert



Arming / Disarming  
through SMS



Store 5 Phone  
Numbers

### Specifications

POWER SUPPLY	
Max Power Consumption	24 watts
Supply Voltage	12-24 V
Total current Rating	2 amp (max)
ZONES	
Zone Response Time	< 500 Millisecond
Zone Loop Resistance	< 5 kilo Ohm For Normally Closed
Max Length of Sensor Cable (multi core cable)	150 m (Depends on cable resistance)
GSM Antenna	3 db
ENVIRONMENTAL	
Environment	Residential/ Commercial/ Light Industrial
Max Humidity	95% Non-Condensing
Operating Temperature	0°C To 45°C
Storage Temperature	-20°C~ + 60°C
PHYSICAL	
Box	Plastic Cabinet
Control Panel Dimensions(mm)	(H X W X L) = 115 X 25 X 110
Weight	125 g

### Features

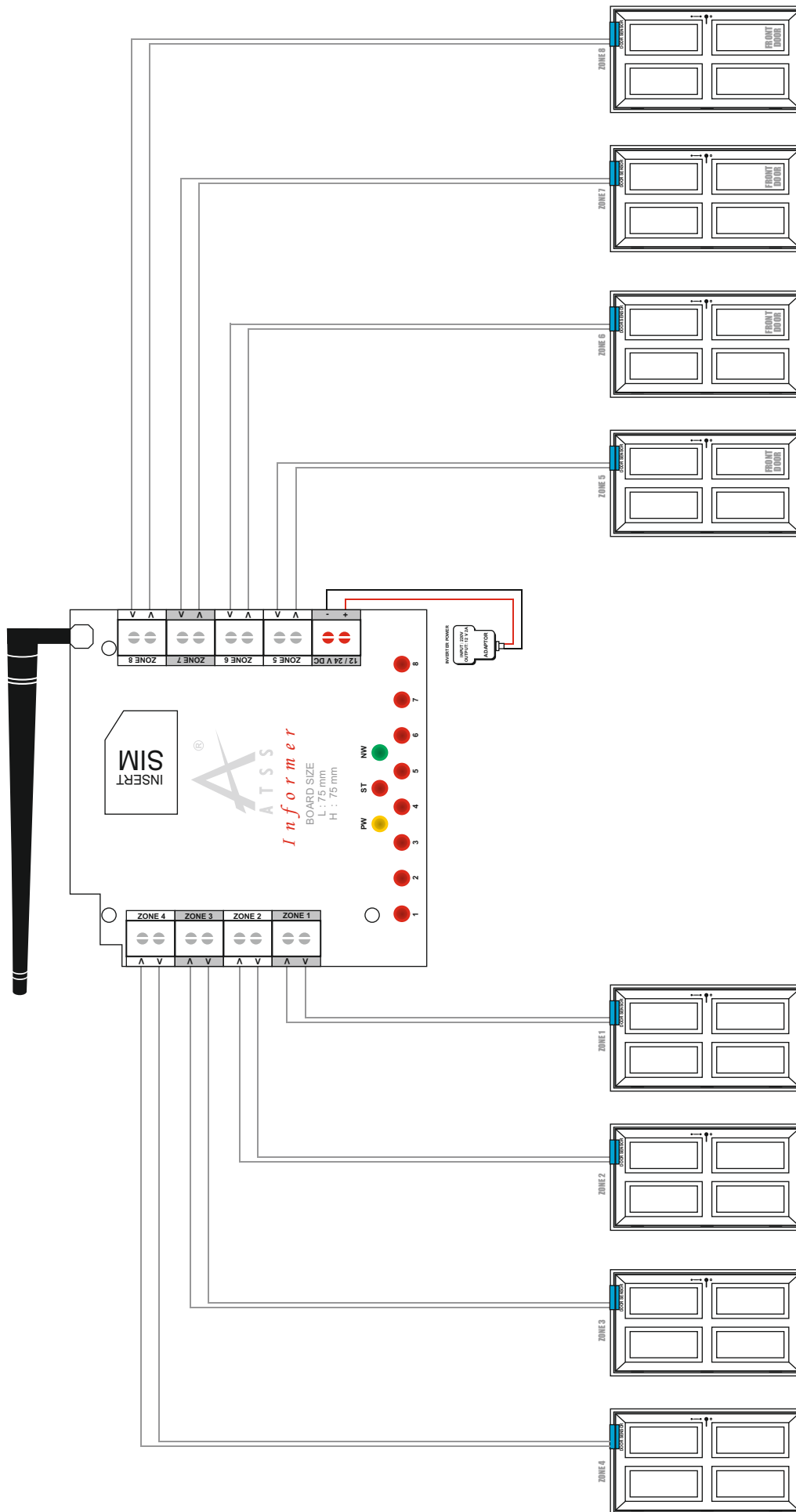
- Eight Input Zones
- Each Input Can Be Assigned To A Separate User
- 8 Individual SMS Alert For Each Zone.
- Built-In Gsm Communicator
- Stores 4 Users & 1 Admin Contact No.
- SMS and/or Calls To 5 Authorized Users
- Editable 12 Bit SMS Alert Message
- Zone - Open, Close Or Both Instant Alert
- Led Indicators For Network Signal & Status.
- Zone Arm/Disarm Through SMS
- Compact Design





# INFORMER

## 8 Input Zones GSM Communicator





# Active - GD

2 Trigger Controlled by Password/SMS  
with 32 texts LCD keypad

GSM  
AUTO DIALER



1 Password



24 Hours Tamper Provision



1 Electrical Appliance Control



2 Trigger, 2 Lines LCD Display Keypad



Arming / Disarming through SMS

## Application



Fire Panel



DVR



Intrusion Panel

## Features

- 2 Trigger Available NO, NC (Normally Open/Close)
- 15 Texts SMS Option Available
- On Board Keypad With 32 Bit Lcd
- Arm/Disarm Through Password / SMS
- Changeable User Password
- Instant Call/ SMS Alert For Trigger Open
- Individual Voice And Text Message Available For Both Trigger
- 20 Sec Recording Time For Individual Voice Message
- Built-In Gsm Communicator
- Memory Available To Store 10 Phone Numbers
- Receives SMS While Arm/Disarm
- Arm/Disarm By SMS Can Be Controlled By First Three Admin Numbers
- Balance Status Can Be Checked By SMS
- Recorded Message Playback Speaker Provision Available
- Control Panel Door Tamper Available
- External Relay For Trigger Mode And Application Mode
- In Application Mode Relay Can Be Operated By SMS
- Used For Both Intrusion And Fire Alarm Panel

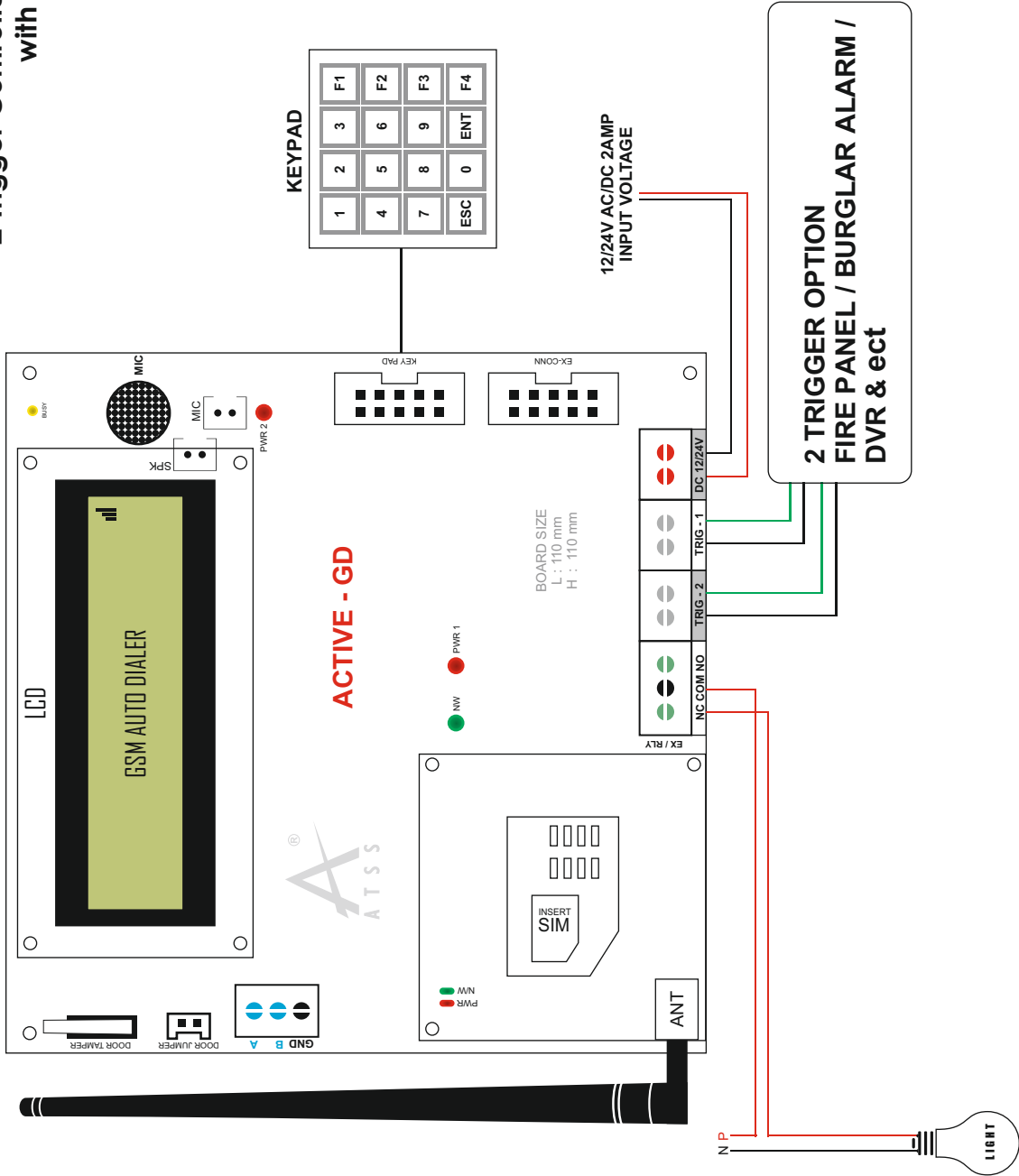
## Specifications

<b>POWER SUPPLY</b>	
Maximum Power Consumption	24 Watts
DC /AC Main Supply	12-24 V / 2 amps
<b>ZONES</b>	
Zone Response Time	< 500 Millisecond
Zone Loop Resistance	< 1 kilo Ohm For Normally Closed
Max Length of Sensor Cable (multi core cable)	150 m (Depends on cable resistance)
GSM Antenna	3 db required
<b>RELAY-NORMALLY CLOSED</b>	
Max Voltage/ current ratings	AC 240 V/5 A
<b>ENVIRONMENTAL</b>	
Environment	Residential/ Commercial/ Light Industrial
Max Humidity	95% Non-Condensing
Operating Temperature	0°C To 45°C
Storage Temperature	-20°C~+ 60°C
<b>PHYSICAL</b>	
Colour	Grey Coloured Metal Box
Control Panel Dimensions(mm)	(H X W X L) = 150 X 45 X 130
Weight	570 g



# Active - GD

2 Trigger Controlled by Password/SMS  
with 32 texts LCD keypad





# ACTIVE - LD

2 Trigger and 3 Modes of option  
with 32 texts LCD Display

LAND LINE  
AUTO DIALER



2 Trigger, 2 Lines LCD Display Keypad    1 Password    24 Hours Tamper Provision    Landline

**Application**



Fire Panel    DVR    Intrusion Panel

**Features**

- 2 Trigger Available NO, NC (Normally Open/Close)
- On Board Keypad With 32 Bit LCD
- Arm/Disarm Through Password
- Changeable User Password
- Trigger Can Be Switched In 3 Modes Of Operation
- Instant Call Alert For Trigger Open
- Individual Voice Available For Both Trigger
- External Relay For Trigger Mode
- 20 Sec Recording Time For Individual Voice Message
- Memory Available To Store 10 Phone Numbers
- Recorded Message Playback Speaker Provision Available
- Both Dialling Modes Can Be Used (Pulse/Tone)
- Control Panel Door Tamper Available
- Used For Both Intrusion And Fire Alarm Panel
- Micro-Controller Based System

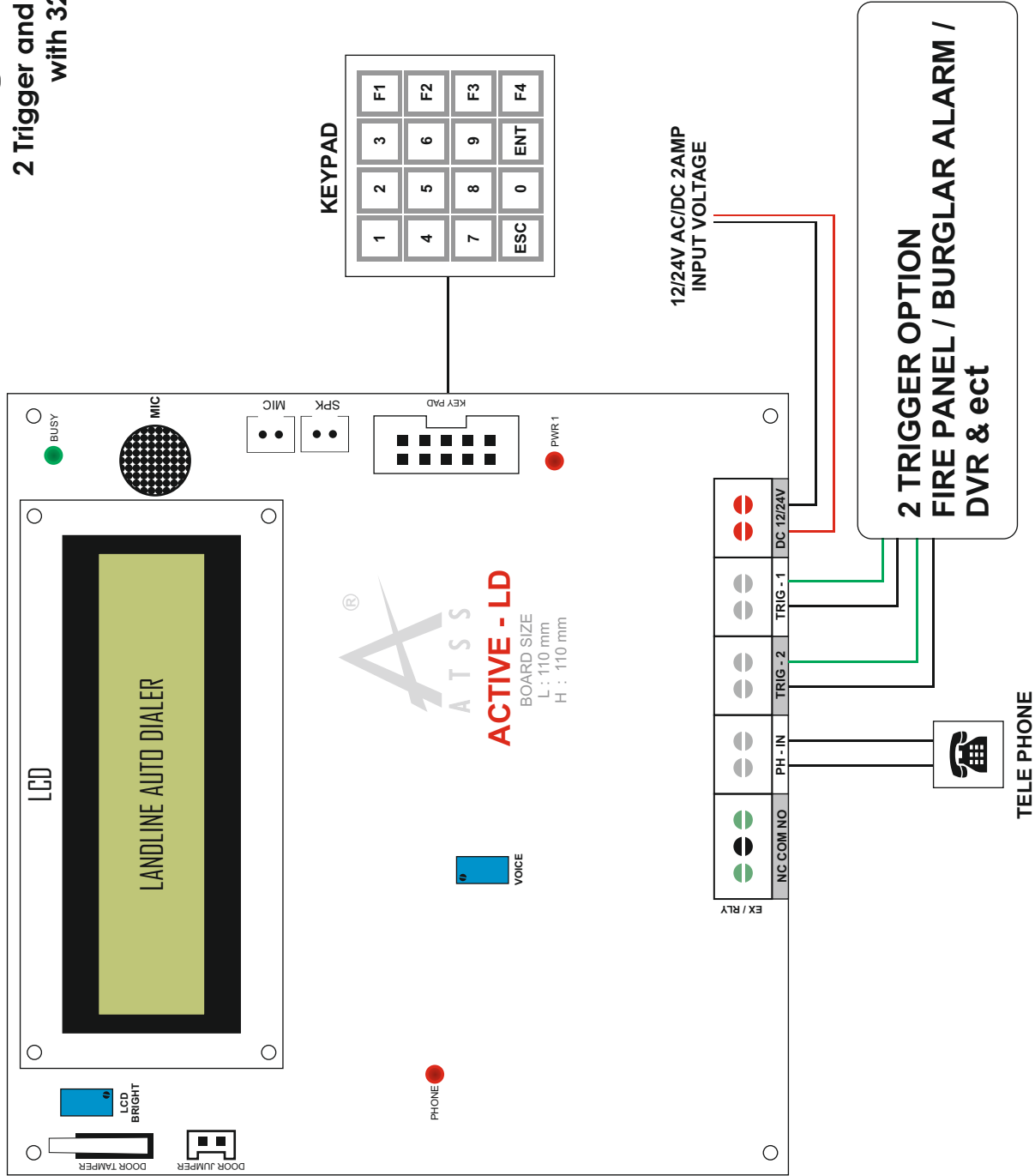
**Specifications**

<b>POWER SUPPLY</b>	
Maximum Power Consumption	12 Watts
DC /AC Main Supply	12-24 V/ 1 Amps
Minimum Phone Line Voltage	60-65 V
<b>ZONES</b>	
Zone Response Time	< 500 Millisecond
Zone Loop Resistance	< 1 kilo Ohm For Normally Closed
Max Output Voltage/ Current for Trigger Supply	12 V/500MA
Max Length of Trigger Cable (multi core cable)	150 m (Depends on cable resistance)
<b>RELAY-NORMALLY CLOSED</b>	
Max Voltage/ current ratings	AC 240 V/5 A
<b>ENVIRONMENTAL</b>	
Environment	Residential/ Commercial/ Light Industrial
Max Humidity	95% Non-Condensing
Operating Temperature	0°C To 45°C
Storage Temperature	-20°C ~ + 60°C
<b>PHYSICAL</b>	
Colour	Grey Coloured Metal Box
Control Panel Dimensions(mm)	(H X W X L) = 145 X 45 X 115
Weight	550 g



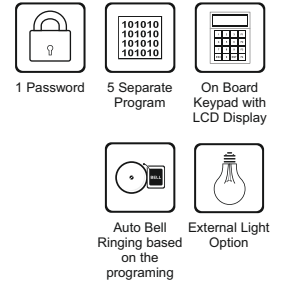
# ACTIVE - LD

2 Trigger and 3 Modes of option  
with 32 texts LCD Display





## Automatic Bell Timer



### Specifications

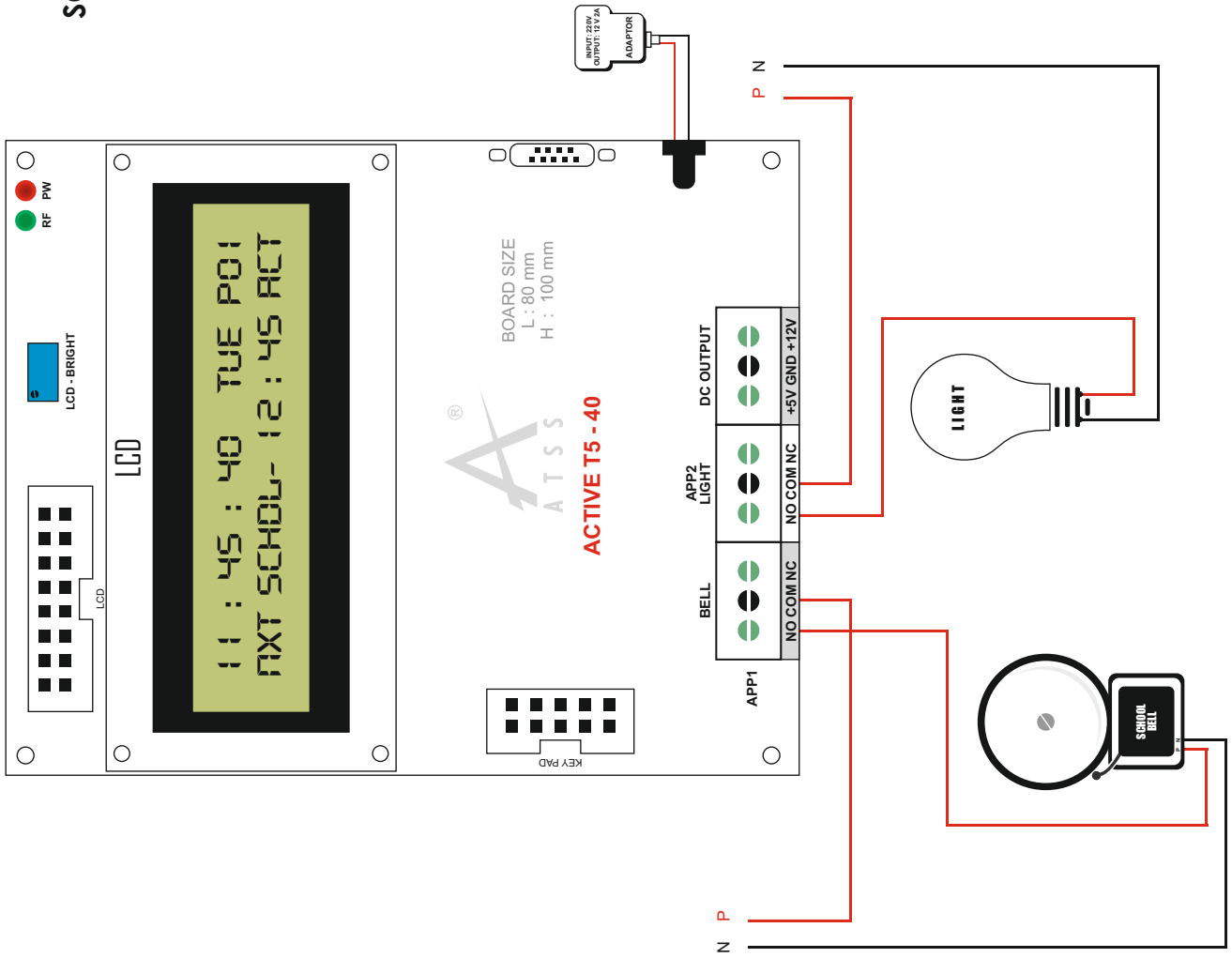
<b>POWER SUPPLY</b>	
Maximum Power Consumption	24 Watts
DC /AC Main Supply	12-24 V / 2 Amps
<b>RELAY-NORMALLY CLOSED</b>	
Max Output Volt / current- Bellout	240 V/5 A
Max Output Volt / current- Appl	240 V/5 A
Max Output Volt / current - for Audio Player	5V/100 MA
<b>ENVIRONMENTAL</b>	
Environment	Light Industrial
Max Humidity	95% Non-Condensing
Operating Temperature	0°C To 45°C
Storage Temperature	-20°C~ + 60°C
<b>PHYSICAL</b>	
Colour	Grey Coloured Metal Box
Control Panel Dimensions(mm)	(H X W X L) = 135 X 35 X 90
Weight	420 g

### Features

- Programmable Automatic Schedule Timer
- 5 Program 40 Time Schedules In Each Program
- Selection of Particular Program at Desired Days.
- Changeable User Password
- Automatic Bell Ringing Based On Programming
- External Light On/Off Time Can Be Modified
- Provision For Time Management
- Manual On/Off for Bell & Light
- On Board Keypad With 32 Bit Lcd
- Micro-Controller Based System

# Active T5-40

SCHOOL/ COLLEGE/ FACTORY TIMER

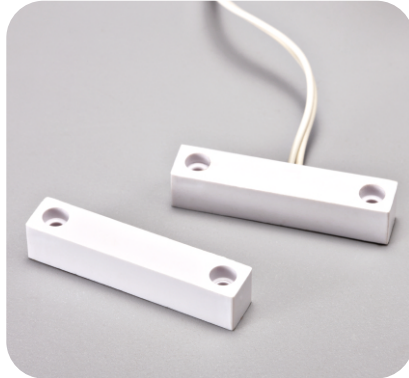


# Alarm Devices

An alarm device or system of alarm devices gives an audible, visual or other form of alarm signal about a problem or condition



**HOOTER**



**SURFACE MOUNT SENSOR**



**RECESSED MOUNT SENSOR**



**SHUTTER SENSOR**



**GLASS BREAK SENSOR**



**BEAM DETECTOR**



**PANIC SWITCH**



**VIBRATION SENSOR**



**PIR**



**BOUNDARY DETECTOR**

# You want to install a **Burglar alarm?**



Security of your Home/building is not a subject to be taken lightly. The effort, the time & the money spend on building, designing, decorating a home / shop. Yet often there isn't enough effort put in protecting your home/building. It is very essential to invest in security measures because it safeguards you, your family & your hard earned valuables.

## Installation consists of

**One Control Panel** - You select as per your requirement.

**Recessed Mount Sensor** - Based on your no of doors or windows to be protected.

**Two Hooters** - If one hooter is disconnected by burglar other hooter will immediately raise an alarm.

**One Panic Switch** - In the case of Emergency or anybody threatening through your window you press it.

**Battery** - Burglar alarm will work upto min of 12 hrs in case of power failure.

**Wiring** - Charges Per Meter.

## Optional

**PIR** - Burglar alarm will works if the burglar opens the door in case he is entering breaking your wall. If you think we want to protect in that case also you go for PIR

**Auto Dialer** - If you are away from your place are most of the time you are away better install autodialer.

**Shutter Sensor** - If you are having a Shutter in your commercial place the Shutter Sensor Used.

Our Surveyors need to visit your property only to assess the design of the alarm system that will best fit your needs and give you a competitive quote - not to try and make a sale there and then. We work hard to maintain our high reputation and this is evident by the fact that a lot of our sales come from other customers' recommendations.

## Application Areas

Burglar Alarm Systems are now a days being used in different places like Temples, Homes, Apartment, Banks, Offices, Jewelry Shops, Factories, Private Properties.

Install a **Burglar Alarm System**,  
Live with peace of mind.



# ACTIVE TOTAL SECURITY SYSTEMS

(Founder Member of ESAI)

info@atss.in | www.atss.in

No.440, Ground Floor, 21st St, N Block,  
Annanagar East, Chennai, Tamil Nadu 600102 India.

+91 044 2618 5454  
+91 9840846666, 9150012345



[facebook.com/atss.fb](https://facebook.com/atss.fb)



[instagram.com/atss.in](https://instagram.com/atss.in)



[threads.net/@atss.in](https://threads.net/@atss.in)



[youtube.com/@atss](https://youtube.com/@atss)



[x.com/infoatss](https://x.com/infoatss)



[pinterest.com/InfoATSS](https://pinterest.com/InfoATSS)



[linkedin.com/in/activenanda](https://linkedin.com/in/activenanda)